

# Welcome

TO OUR  
APARTMENT



**HOUSE MANUAL AND RULES**

140, 1A ROSE STREET, EH2 3JD



# About The Apartment

Welcome to our bright luxurious apartment which was built in 1770 to 1781 and recently refurbished to a very high standard in 2020 to bring a more comfortable, bright and modern vibe to your stay.



About us.



Our selected accommodations combine the best features of a hotel and vacation rental home to ensure a wonderful and effortless stay! We take the guesswork out of where you are staying so you can concentrate on what you want to be doing. We handpick the accommodations in the best properties all over Edinburgh offering great vacation rental experience and impeccable service: serviced apartments, oversized suites and accommodations in resorts with outstanding amenities and much more! We do this by testing them ourselves before the hit the list, so we know what to expect before you make the reservation. We are available 24/7 to make sure all your special requests are taken care of and to assist with any questions or issues you might have throughout your stay

**CONTACT  
INFORMATION**

**Phone:**

077-022-77034

**Email:**

Admin@MaverickProperties.uk

**EMERGENCY  
INFORMATION**

**Hospital:**

51 Little France Cres, Old  
Dalkeith Rd, Edinburgh EH16 4SA

T: 0131 536 1000

**Police:**

2 Gayfield Square, Edinburgh  
EH1 3NW

T: 01786 289070

**EMERGENCY DIAL:**

**999**

Wifi



is on the apartment

**NETWORK** VM2514083

**PASSWORD** sr4wyJzFkp5

**THE HOME SWEET HOME**

140, 1A Rose Street, EH2 3JD



# Check in

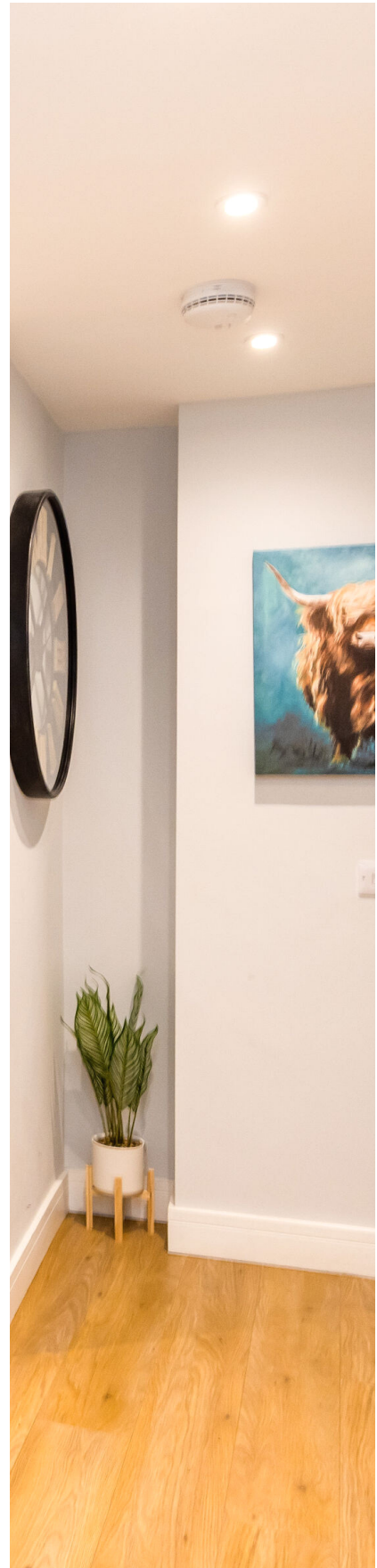
## **CHECK IN TIME: 15:00 PM**

Guests should respect their Host's check-in window. Any check-in before or after the designated window should be approved by Maverick Apartments.

# Check out

## **CHECK OUT TIME: 10:00 AM**

Guests should complete checkout, including key return to lockbox, by the designated checkout time indicated on the reservation, and should not leave belongings at the listing past the designated checkout time for storage or later pickup without prior approval from the Maverick Apartments.



# House Rules

## NO PETS

As much as we love pets, future guests may be allergic to animals. There is a strict no pets allowed policy.

## NO SMOKING

Strictly no smoking on these premises. Guests who breach legislation by smoking in no smoking premises will be liable for a £250 fine. This includes the use of tobacco, cannabis, e-cigarettes, etc

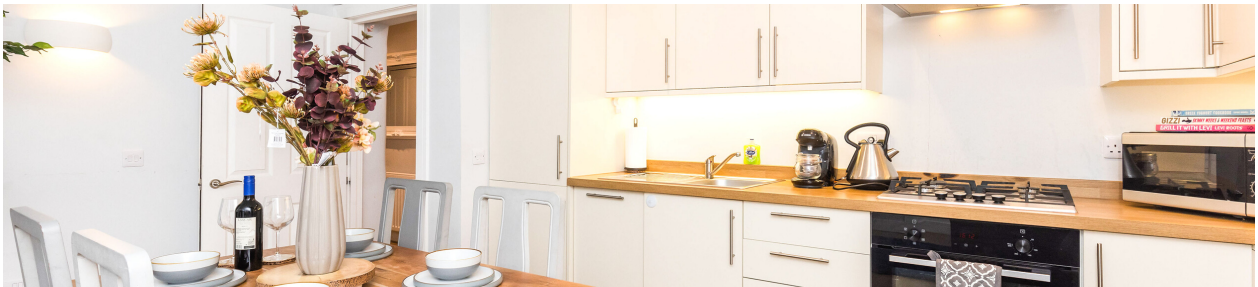
## PARTIES

As much as we love to celebrate and party, make sure your very respectful of our neighbours and respect designated quiet hours and should not disturb the surrounding community with a disruptive level of noise.

## REPORT ANY DAMAGES

Where guests cause damage that is beyond normal wear and tear, we expect guests to inform us of the damage as soon as possible and work with the us to find a reasonable solution.

Guests are expected to pay reasonable requests for reimbursement if they're responsible for damage, missing items, or unexpected cleaning costs





# Appliances & Electronics

COFFEE MACHINE

MICROWAVE

OVEN/COOKER

WASHER/DRYER

DISH WASHER

TOASTER

TELEVISION

KETTLE

FRIDGE/FREEZER

IRON/BOARD

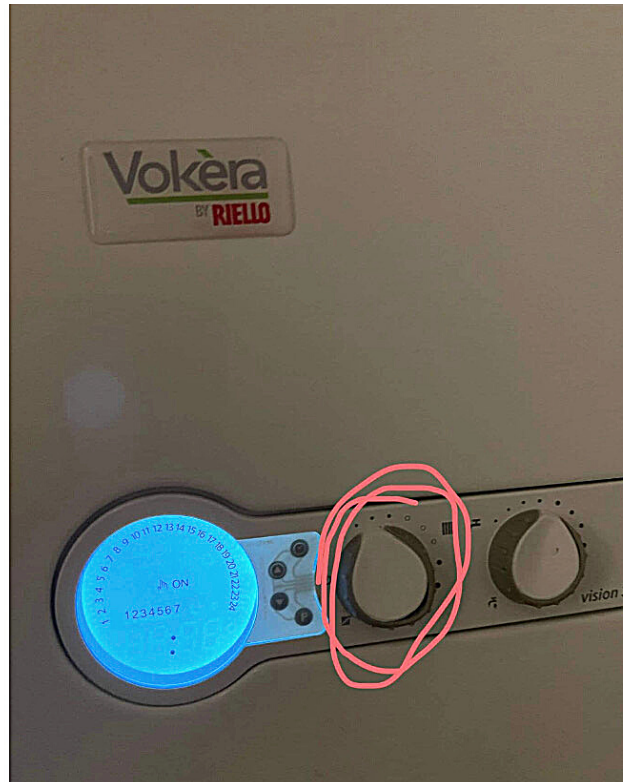
HAIR DRYER

READING LAMPS

# The Little Things



Respect our sofa beds and place the flannel sheets provided so we avoid stains and mess while sleeping.



Warm or chilly? Control the temperature with this dial in Bedroom 2.



Extra duvet sets are placed in the drawers within the bedrooms.



# Getting around

## TAXI & AIRPORT SHUTTLE

The Airlink bus (service 100) runs between the airport and the city centre, reaching Waverley Bridge railway station in 25 minutes.

City Cabs are the official taxi provider at Edinburgh Airport and have a large presence at the Airport  
Phone: 0131 228 1211



## BUS & TRAIN SCHEDULE

Edinburgh offers visitors easy transport links into and across the city. An excellent bus service combined with first class rail links.

visit:

<https://edinburgh.org/travel/getting-around/>

## BIKE RENTAL

Edinburgh's largest bicycle hire outlet is Biketrax at 11-13 Lochrin Place; 0131 228 6633. They have a very wide range of machines available, including city bikes, hybrids, road bikes, mountain bikes & electric bikes.

## Parking

On street parking is generally paid for throughout the city, there are traditional meters that you pay using coins. A ticket will print which should be stuck in your windscreen. You can also use the RingGo app.

# Places to see

## THE ROYAL MILE

Your trip to Edinburgh isn't complete without seeing the Royal Mile, the city's most famous street, running through the centre of the Old Town.

## NATIONAL MUSEUM

You won't be lacking in options if you want to visit museums in Edinburgh, with dozens to choose from, but the biggest and most diverse, is the National Museum of Scotland.

## EDINBURGH CASTLE

until you pay a visit to the most iconic landmark in the city, Edinburgh Castle. You can see it from around the city, as it dominates the Old Town skyline from its position on top of an extinct volcano, Castle Rock

## HOLYROOD PARK

Climbing Arthur's Seat, the massive extinct volcano dominating Edinburgh's skyline, should definitely be on your to-do list when visiting the city!





# The Castle

## EDINBURGH CASTLE

Edinburgh Castle is a historic castle in Edinburgh, Scotland. It stands on Castle Rock, which has been occupied by humans since at least the Iron Age, although the nature of the early settlement is unclear.

Hours:

9:30am–5pm

Phone: 0131 225 9846

Address: Castlehill, Edinburgh EH1 2NG



# The Mile

## THE ROYAL MILE

The Royal Mile is at the heart of Edinburgh's Old Town, with Edinburgh Castle at its head and the Palace of Holyroodhouse at its foot. Its name comes from its tradition as a processional route for kings and queens for the last 500 years.

The Royal Mile  
Edinburgh EH8 8BP





# Arthur's Seat

## HOLYROOD PARK

Arthur's Seat is an ancient volcano which is the main peak of the group of hills in Edinburgh, Scotland, which form most of Holyrood Park, described by Robert Louis Stevenson as "a hill for magnitude, a mountain in virtue of its bold design

Elevation: 251 m

Prominence: 174 m

Location: Edinburgh, Scotland

OS grid: NT27537295



# The Museum

## NATIONAL MUSEUM

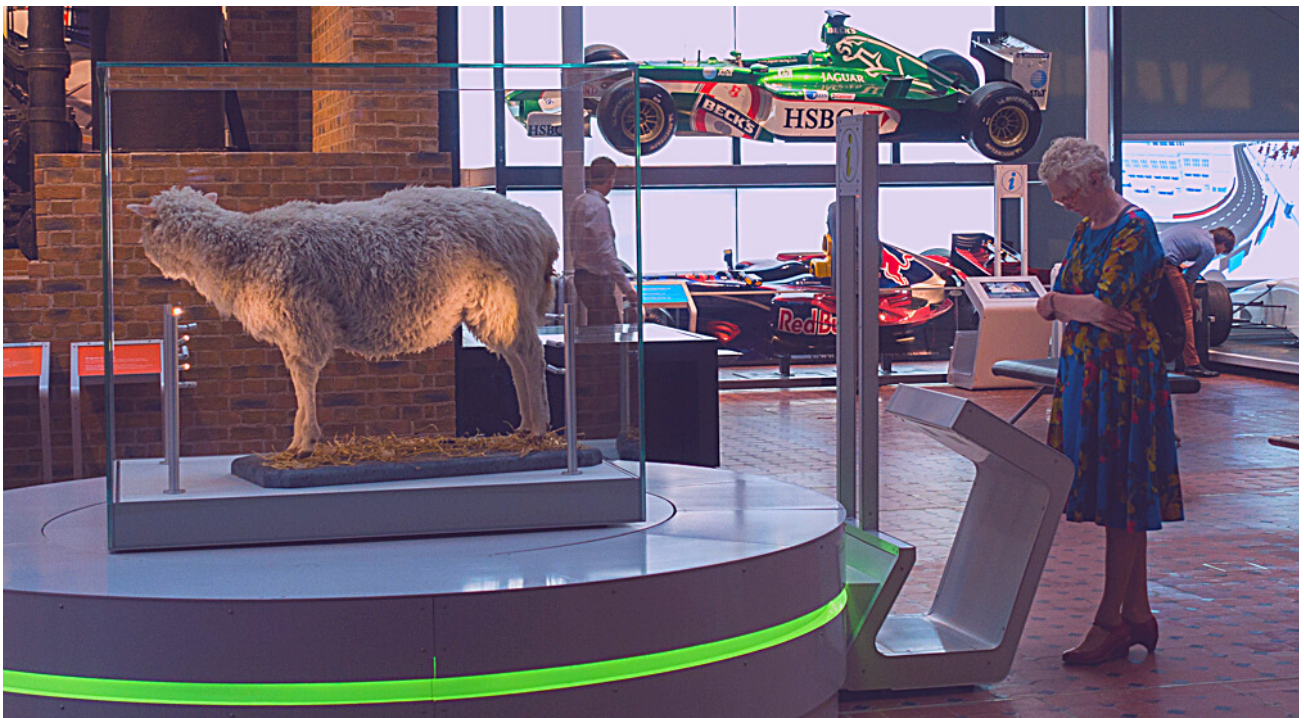
The National Museum of Scotland in Edinburgh, Scotland, was formed in 2006 with the merger of the new Museum of Scotland, with collections relating to Scottish antiquities, culture and history

Address: Chambers St, Edinburgh EH1 1JF

Hours:

Open · 10AM - 5PM

Phone: 0300 123 6789







## KAREN'S UNICORN

**Karen's Unicorn** is a restaurant serving authentic, traditional Chinese cuisine.

T: 0131 556 6333  
8B Abercromby Pl, EH3 6LB

## CHAOPRAYA

***Chaopraya** creates Thai and distinct signature dishes, including vegan and gluten free options, accompanied by cocktails, wines and beers*

T: 0131 634 0023  
4th Floor, 33 Castle St, EH2 3DN



## DISHOOM

**Dishoom** serves a lovingly curated menu of Bombay comfort food and first-class drinks all day, every day

T: 0131 2026 406  
3a St Andrew Square , EH2 2BD

## HAWKSMOORE

**Hawksmoore** is the place for Prime cuts of matured beef, seafood & other British classics served in striking environs.

T: 0131 526 4790  
23 West Reguster Street, EH2 2AA

Places to eat

# Bars & Wineries

## **THE DOME**

Corinthian columns, marble bars, a front bar serving wine, beer & whiskey.

14 George St, EH2 2PF  
T: 0131 624 8624

## **COPPER BLOSSOM**

Light-filled, basement cocktail bar/Scottish restaurant with floral fabrics and wicker.

107 George St, EH2 3BG  
T: 0131 297 2630

## **ROSE SREET BREWERY**

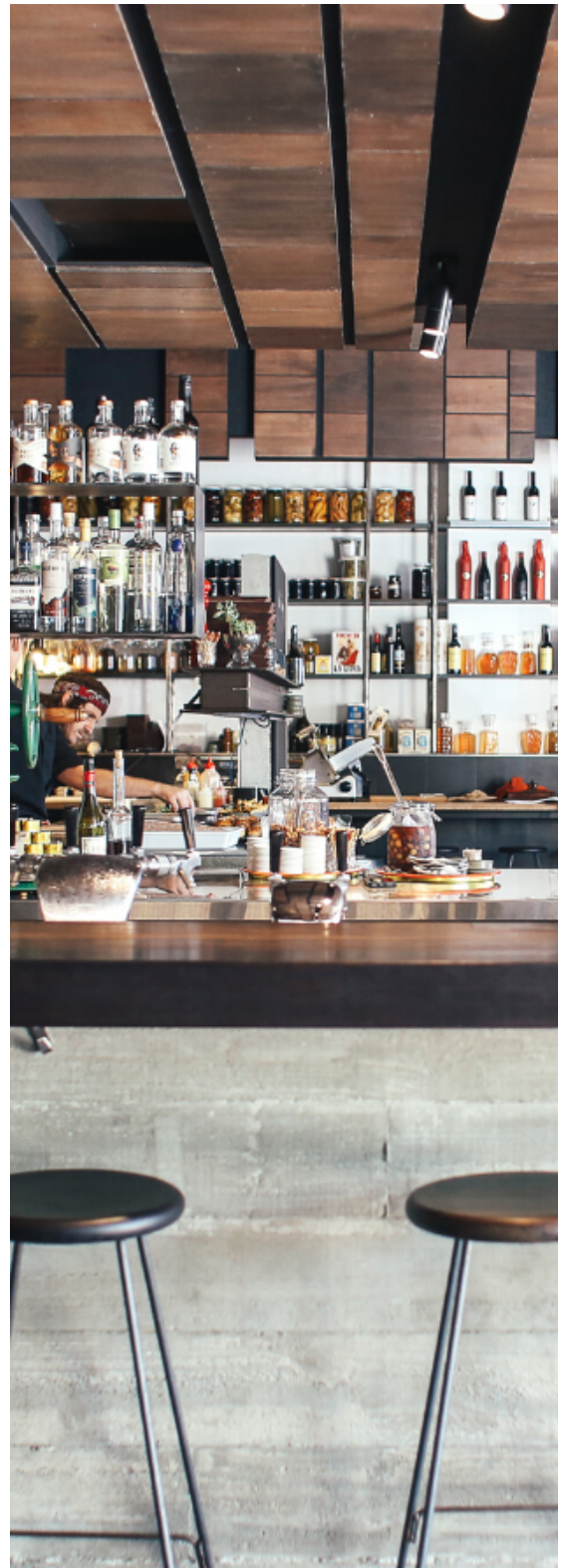
Step in to discover a traditional pub of unique character, revered for its eclectic range of real ales

55-57 Rose St, EH2 2NH  
T: 0131 220 1227

## **SHANGHAI NIGHTCLUB**

Stylish nightclub with 2 rooms boasting distinct Asian decor, VIP lounges and private bars.

16a George St, EH2 2PF  
T: 0131 270 3900



# Before your go!



## **DISHES**

Load all dishes into the dishwasher, press start



## **USED FOOD**

Empty and dispose of used food items in fridge



## **GARBAGE & RECYCLING**

Remove garbage and recycling and put in the bins beside the door



## **WINDOWS & LIGHTS**

Ensure all windows are locked and lights are turned out



## **KEYS**

Return keys to the lockbox safe



## **PERSONAL BELONGINGS**

Don't forget any of your belongings





Our Reviews



## **"AMAZING STAY"**

"Was the perfect choice for our family getaway. We were truly impressed with the enchanting decor and generously stocked room that opens to include you in the city's daily routine!

## **"HIGHLY RECOMMEND"**

Thank you for a fabulous stay. The apartment was just as described, very modern, clean, bright, comfortable, great location near the castle, central, near lots of restaurants, walkable to all amenities in centre of town. Host was very responsive and communicated well, we appreciate all information and help provided. We had a great holiday and would highly recommend!

## **"WE WILL BE BACK"**

Absolutely beautiful. Best location. We honestly couldn't have found a better place for what we needed. We will 100% be back to this beautiful home!

## **"OUTSTANDING"**

Our stay at Maverick Apartments was superb, the apartment was outstanding, situation perfect, walking distance to everything Edinburgh has to offer.

## **"BEYOND EXCEPTIONAL"**

This stay was beyond exceptional and blew us away. The accommodations were the best of the best and the neighborhood and surrounding area is highly desirable and historic. Our host was a terrific communicator and every detail was present upon check in. I can't say enough about how unique and special this was for our family and we created memories for a lifetime here. Thank you!

## **"MORE INCREDIBLE THAN THE PHOTOS"**

Can not even tell you how amazing our stay was - the place was even more incredible than it looks in the photos,

## **"HIGH SPEC, UNIQUE LOCATION"**

This apartment makes for a completely special experience. The apartment is immaculate, modern, high spec, unique, in the most awesome location. We used it for a special occasion and it was worth the money for sure! Highly recommend.

**PLEASE LEAVE US A REVIEW IF  
YOU LIKE OUR APARTMENT.**

**by leaving us a review, you are eligible for next stay discount up to 20%**



*Thank you!*

PLEASE ENJOY YOUR STAY





**This is Edinburgh's main Christmas market. Situated in the heart of the city, iconic sites such as Edinburgh Castle, the Scott Monument, the Balmoral Hotel and Calton Hill lend it a dramatic backdrop**





**It's a classic Edinburgh scene, as a Royal Mile crowd gathers around one of the great street performers at the Edinburgh Festival Fringe**



**Calton Hill is famous for its collection of historic monuments, which form some of the most important landmarks of the city. One of the most striking is the National Monument, inspired by the Parthenon in Athens**





**Greyfriars Bobby is a very famous dog in Scotland. He was a Skye Terrier who became known in the 19th century for (as legend has it) spending 14 years guarding the grave of his owner, until his own death on 14 January 1872.**



**At 200 feet (61 meters) tall, the Scott Monument is the largest monument in the world dedicated to a writer. Inaugurated in 1846, Scott Monument is a Gothic monument built in honour of the Scottish writer Sir Walter Scott. The tower, on Princes Street, is blackish in colour giving it an eerie beauty.**





**The Edinburgh Dungeon is the ultimate underground journey through Edinburgh's darkest history; a unique, award-winning visitor attraction that brings together an professional cast of theatrical actors, special effects, 360 degree sets and thrilling rides in a truly unique and immersive walk-through experience. Shows are based on real Scottish history, minus the boring bits!**



**The Grassmarket was the scene of one of Edinburgh's most notorious riots, in September 1736. Earlier that year two popular smugglers, Wilson and Robertson, were sentenced to death.**





**Overview. Victoria Street in the Old Town has to be one of the most photographed locations in the city. Its gentle curve and colourful shopfronts make it a favourite spot for tourist photos, postcards and TV adverts.**





**Rose street Edinburgh pubs offer something for everyone, whether you want a slice of history or a modern atmosphere. Out of all the 12 main pubs on Rose St, we've selected our favourite to give you an epic rose street pub crawl guide. It's the perfect thing to do whilst you're on a stag do in Edinburgh**

# MAVERICK APARTMENTS

140, 1A ROSE STREET, EH2 3JD

*APARTMENT OWNED BY:*  
MAVERICK APARTMENTS

*Book today by visiting*

Booking.com

AirBnB.com

VRBO.com

**CONTACT DETAILS:**

Admin@MaverickProperties.uk

T: 07702277034